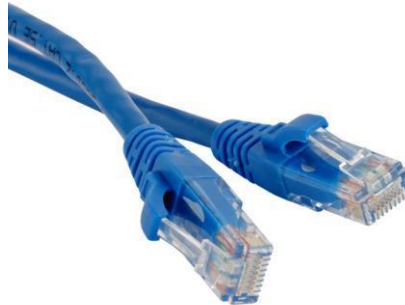


Cat 6 UTP Patchcord

Part No: PC-6UP-L(L)-(C)

L: Length

C: Color



Specification

- Conductor: 7 x 0.2mm
- Insulation: Color-coded PE insulation
- Cable Jacket: PVC

Features

- Fast and Convenient Connection
- Multi-Strands Conductor Insures the Excellent Reliability and Stability
- Color in Blue, Yellow, Light Grey, Dark Grey, White, Green, Red, Black & Orange
- Length in 0.5m, 1m, 2m, 3m, 5m, 8m, 10m, 15m, 20m
- Standards: Compliant with TIA/EIA 568B & ISO / IEC-11801 Cat6 Standard

Applications

- LAN Network System
- Computer Network Distributing System
- Telecommunication Network System
- Testing Equipment System
- CATV System